

# B4U Close Home Inspections Report



123 Your Street  
Georgetown, KY

Prepared for  
Bill & Dale Client

## **B4U Close Home Inspections**

104 Lawson Drive, Suite 103-400  
Georgetown, KY 40324

**502-570-4054**

[www.b4uclose.com](http://www.b4uclose.com)



B4U Close Home Inspections Photo Album  
123 Your Street, Georgetown, KY



Add leader to this downspout and soil to the corner to allow the water to drain away from the structure.



This deck rail creates a climbable ladder effect.



The deck steps should have a grippable handrail installed for safety.



The overhead door springs should have a safety cable ran thru them in case they break.

B4U Close Home Inspections Photo Album  
123 Your Street, Georgetown, KY



The deterioration shown here signals that the shingles are nearing the end of their design life.



The cupping and curling shown here are signals that the shingles are nearing the end of their design life.

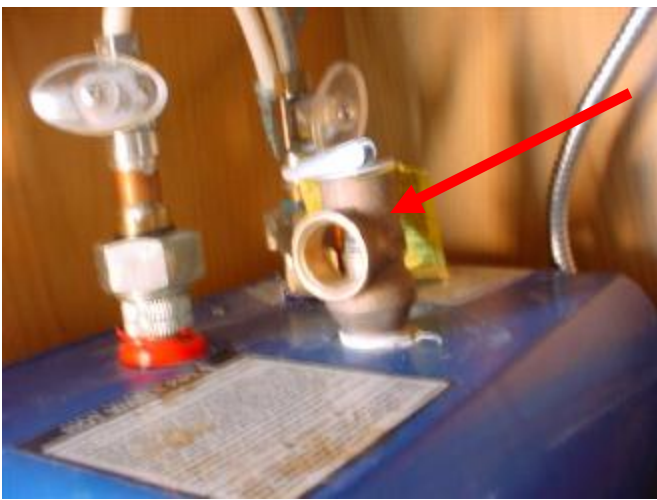


I recommend installation of rain caps on these chimney flues to prevent water getting into the fireplaces.



I don't know why the caulking was placed on the vinyl siding joints. Ask the seller.

B4U Close Home Inspections Photo Album  
123 Your Street, Georgetown, KY



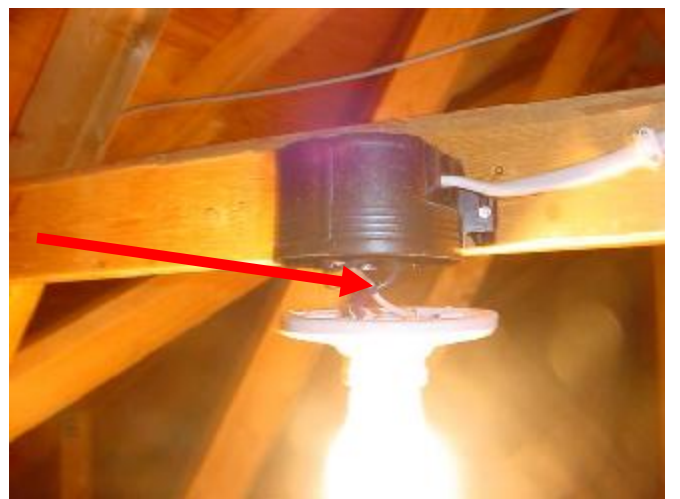
TPRV on water heater under kitchen sink needs a drain pipe installed to direct any discharge safely away from people. Review installation instructions.



Breakers are not generally designed for two wires under the same screw. Especially with different wire sizes. Others exist beside these two.



Terminate these electrical wires correctly.



Light fixture in attic supported only by wires.

B4U Close Home Inspections Photo Album  
123 Your Street, Georgetown, KY



Unsafe electrical splice in attic at bathroom vent fans. Splice should be in covered junction box.



Uncovered junction box at rear wall of gable over dining room.



See notes under Structure – Piers/Posts about these steel columns.



Typical cracks at top & bottom of left side basement window.